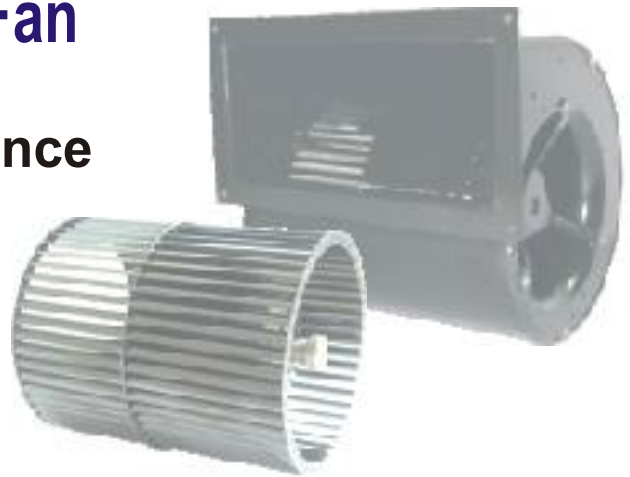


# Double Inlet Centrifugal Fan

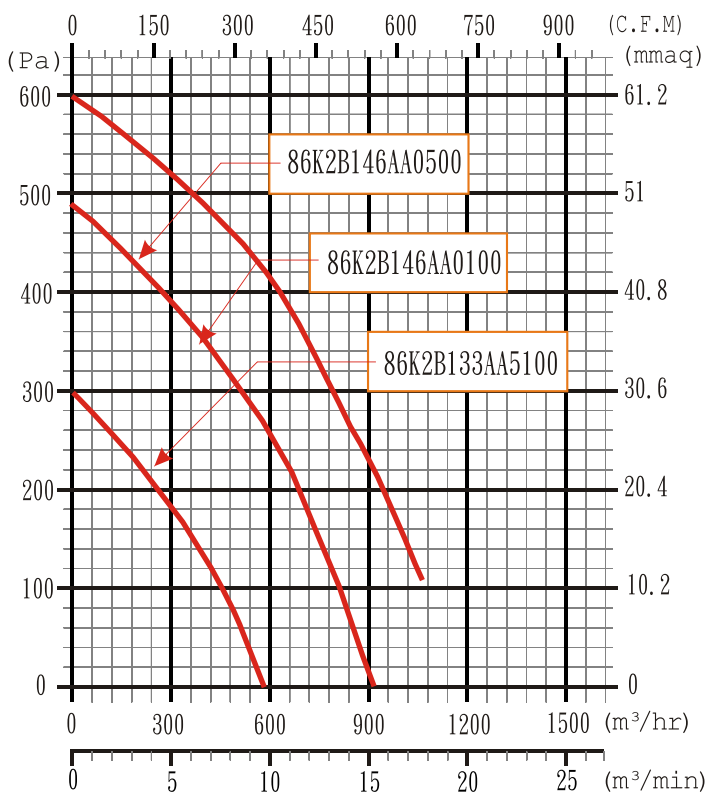
## 110V 2 & 4 Pole Performance

Ball Bearings  
 Insulation F class  
 Protection IP 44  
 Material: Steel Impeller  
 Steel Painted Black Scroll

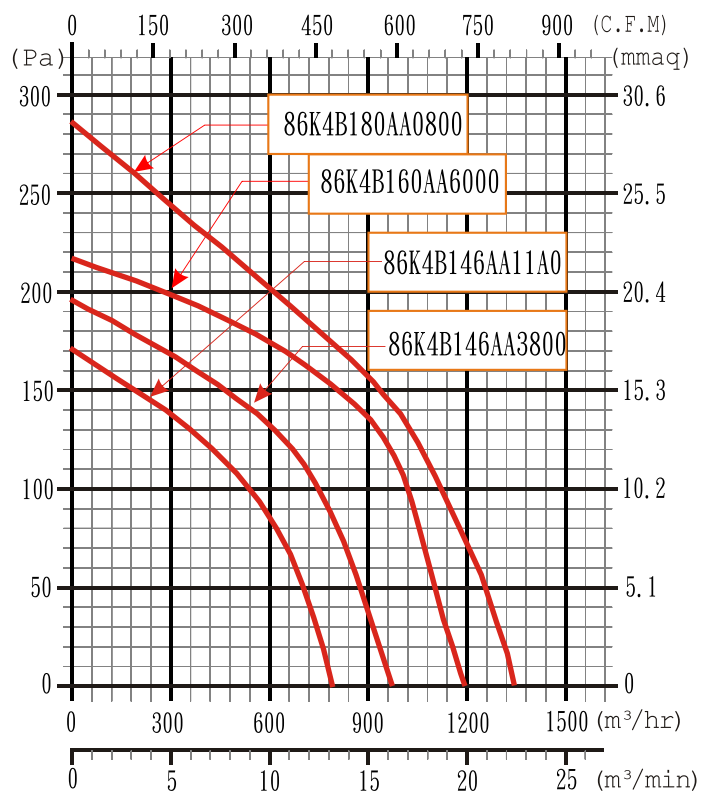


Model type	Motor	V	Hz	M <sup>3</sup> /hr	RPm	Wi	A	μF/Vac	Pa	dB	Kg
86K2B133AA5100	812BM042	110	60	580	1290	165	1.52	20/250	0	56	3.5
86K2B146FA0100	812BM042	110	60	910	1040	250	2.3	20/250	0	63	4.4
86K2B146FA0500	812BM042	110	60	1040	1610	330	3.02	30/250	108	72	4.4
86K4B146FA11A0	812BM035	110	60	790	950	110	1.02	10/250	0	55	4.2
86K4B146FA3800	812BM035	110	60	980	1415	160	1.48	16/250	0	56	4.3
86K4B160AA6000	812BM042	110	60	1210	1380	190	1.73	20/250	0	58	4.5
86K4B180AA0800	812BM060	110	60	1350	860	208	1.92	20/250	0	66	8

**60Hz-2Pole**



**60Hz-4Pole**



# Double Inlet Centrifugal Fan

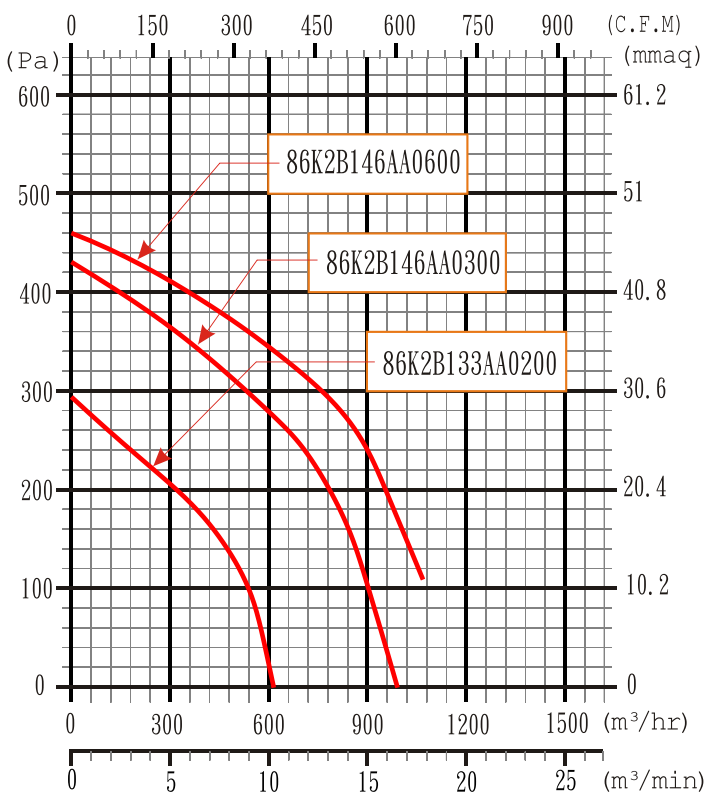
## 220V 2 Pole Performance

Ball Bearings  
 Insulation F class  
 Protection IP 44  
 Material: Steel Impeller  
 Steel Painted Black Scroll

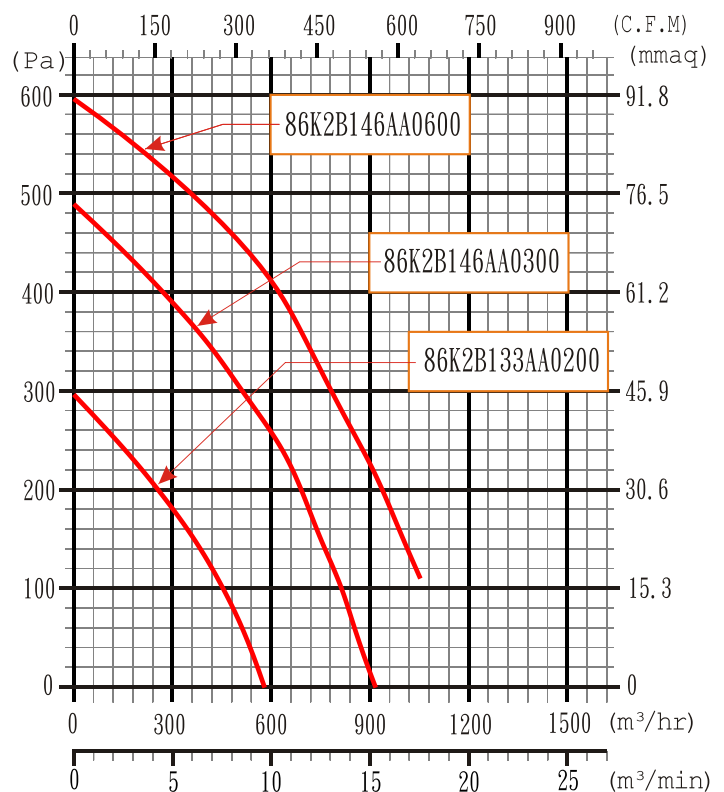


Model type	Model	V	Hz	M <sup>3</sup> /hr	RPm	Wi	A	μF/Vac	Pa	dB	Kg
86K2B133AA0200	812BM042	220	50	610	1440	150	0,69	5/450	0	59	4.2
			60	580	1290	165	0.76			56	
86K2B146FA0300	812BM042	220	50	990	1130	225	1.03	6/450	0	61	4.8
			60	910	1040	250	1.15			61	
86K2B146FA0600	812BM042	220	50	1065	1690	285	1.3	8/450	108	63	4.8
			60	1045	1610	330	1.5			63	

**50Hz-2Pole**



**60Hz-2Pole**



# Double Inlet Centrifugal Fan

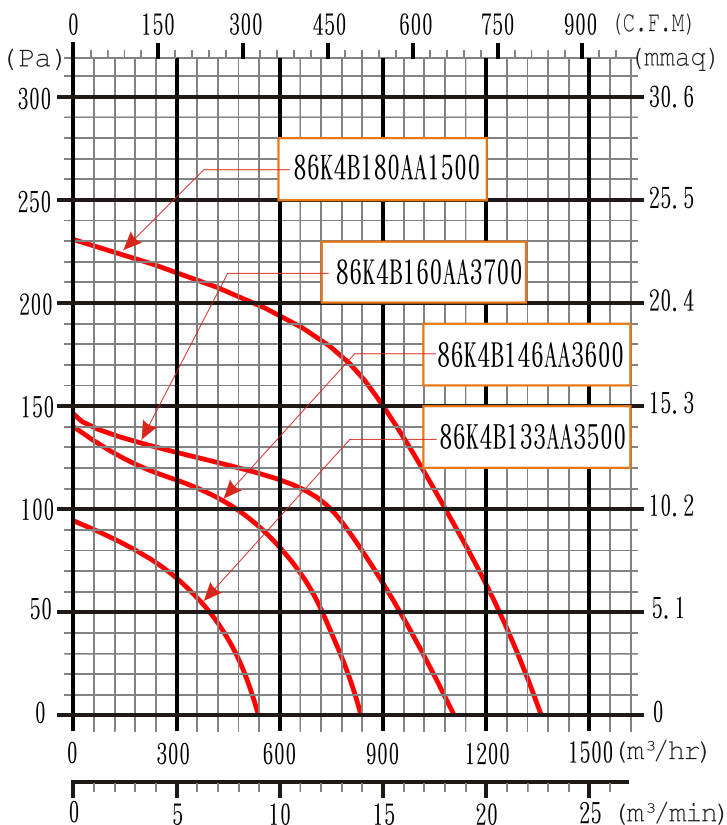
## 220V 4 Pole Performance

Ball Bearings  
 Insulation F class  
 Protection IP 44  
 Material: Steel Impeller  
 Steel Painted Black Scroll

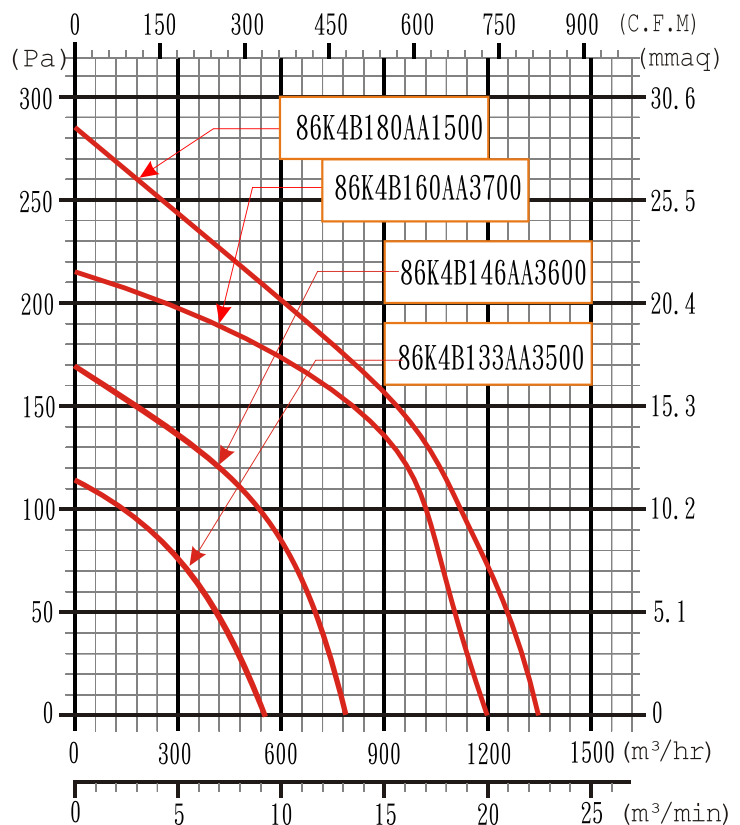


Model type	Motor	V	Hz	M <sup>3</sup> /hr	RPm	Wi	A	μF/Vac	Pa	dB	Kg
86K4B133AA3500	814BM025	220	50	535	1170	65	0.3	2/450	0	55	4.1
			60	550	1200	80	0.37			56	
86K4B146FA3600	814BM035	220	50	835	1000	90	0.41	2.5/450	0	55	4.3
			60	790	900	110	0.5			58	
86K4B160AA3700	814BM042	220	50	1100	1285	145	0.67	5/450	0	58	4.5
			60	1210	1380	190	1.51			58	
86K4B180AA1500	814BM060	220	50	1370	885	180	0.88	5/450	0	65	8
			60	1350	860	208	0.96			66	

50Hz-4Pole

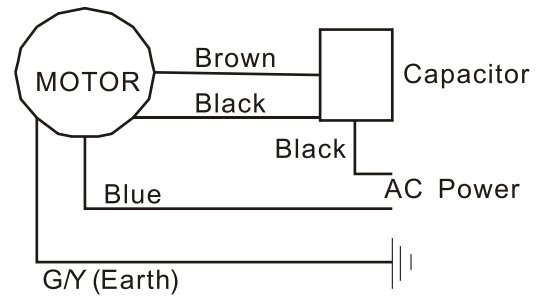


60Hz-4Pole

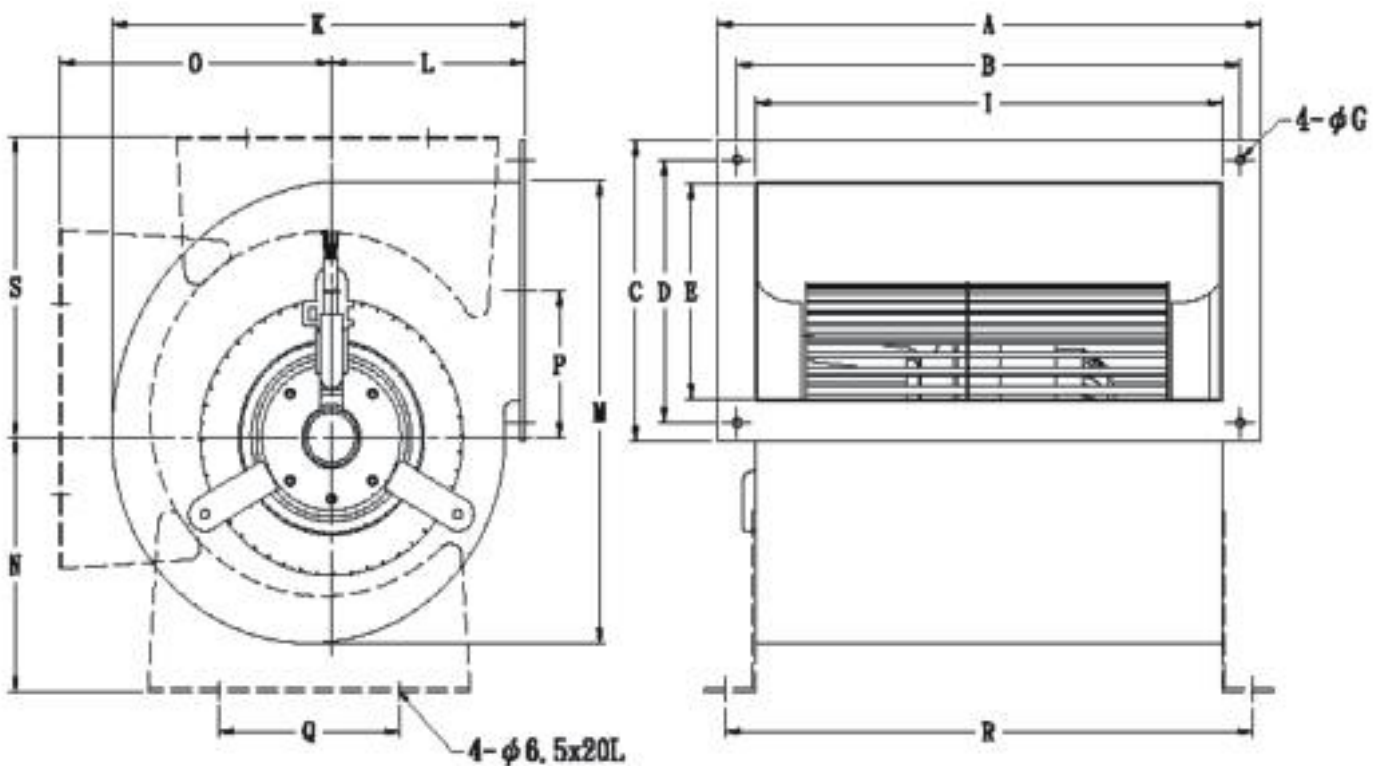


# Double Inlet Centrifugal Fan

## Outline Dimension Data



## Wiring Connection



Model	A	B	C	D	E	G	I	K	L	M	P	N	O	S	Q	R
86K2B133AA	254	238	108	92	67	5.5	215	172	89	180	65.5	~	~	~	~	~
86K2B146FA	270	254	142	126	102	5.5	232	206	97	219	69	120	135	142	90	260
86K4B133AA	254	238	108	92	67	5.5	215	172	89	180	65.5	~	~	~	~	~
86K4B146FA	270	254	142	126	102	5.5	232	206	97	219	69	120	135	142	90	260
86K4B160AA	270	254	142	126	102	5.5	232	238	143	238	80	~	~	~	~	~
86K4B180AA	314	288	245	220	192	6.5	262	316	150	357	93	145	172	194	130	290